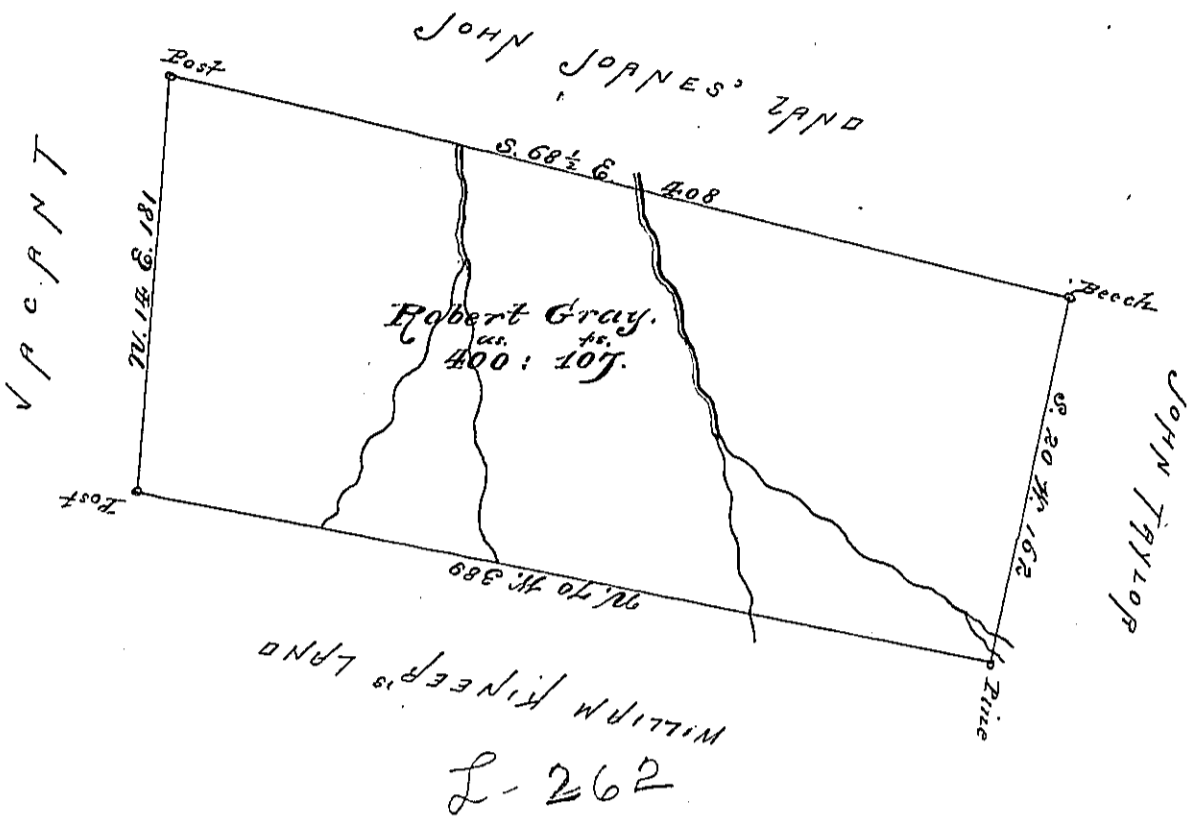


K-69



L-262

Situate on the Head Easterly Waters of the Clear Field Creek on the West side of the Alleghania Mountain about a Mile North of the New Road laid out & confirmed between the Navigable Waters on the Frankston Branch of Juniata River & the Conamough River in Frankston Township Huntingdon County. Containing 400^{ac} 107^{1/2} and the usual allowance of Six per Cent for Roads. Surveyed the Twenty fifth day of June 1788, In pursuance of a Warrant Dated the 20th Day of December 1784.

John Canon D.S.

To John Luk oblit^d Esq. S. G.

IN TESTIMONY that the above is a copy of the original remaining on file in the Department of Internal Affairs of Pennsylvania, made conformably to an Act of Assembly approved the 16th day of February, 1833, I have hereunto set my Hand and caused the Seal of said Department to be affixed at Harrisburg, this

Ninth day of April 1891

Wm. J. Stewart
Secretary of Internal Affairs